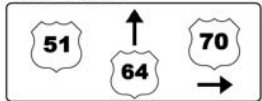


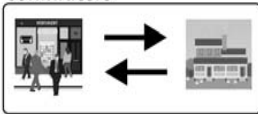
**RAMSEY Citizens Advisory Group # 3**  
**June 24, 2008**  
**Problem Statement**

The US 51 highway does not provide an easy and safe connection between local communities or a good way for long distance travel.

Improve Access to East/West and North/South State Routes



Improve Connectivity for Commuters



Provide Efficient Connections Between Communities



The US 51 highway hinders the movement of goods, services and limits future business, residential, and tax base expansion.

Maintain Access to Downtown Business



Improve Access to Commercial Centers



Maintain Access for Farm Equipment



Promote Tourism



Maintain Access to Homes and Businesses



Provide Efficient Connections Between Communities



The US 51 highway is unsafe for cars, trucks, buses, farm equipment and other forms of transportation to be on the road at the same time.

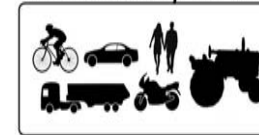
Improve Safety



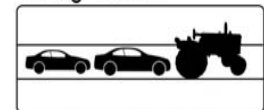
Address Pedestrian/Bicycle Traffic



Address Mobility for Users



Improve Safety for Slow Moving Vehicles



Maintain Access to Homes and Businesses



Other important community characteristics

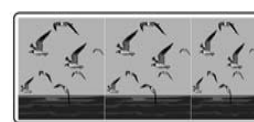
Maintain Rural Character



Maintain Cultural Identity



Address Water Quality and Environmental Conservation



Maintain Quality of Life

